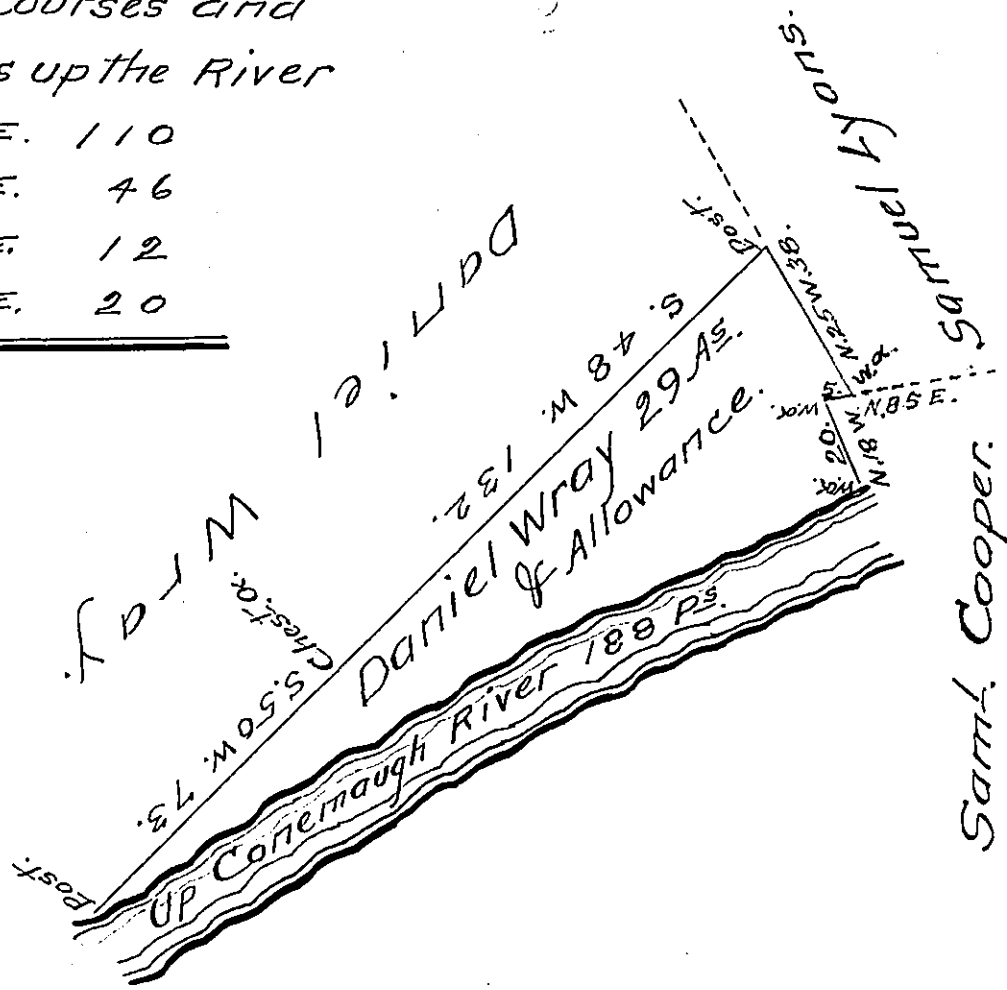


Several Courses and distances up the River

N. 62	E. 110
N. 70	E. 46
N. 68	E. 12
N. 62	E. 20

Large Scale 50 P.S. to an Inch.



Surveyed to Daniel Wray on the 24<sup>th</sup> of August 1815 the above described tract of twenty nine acres and allowance of six P. Cent & including an improvement situate adjoining his other land and lands of Samuel Lyons and Samuel Cooper on the Conemaugh River in Conemaugh Township Indiana County. By Warrant of the 8<sup>th</sup> of February 1815.

To Richd. T. Leech Esq. }  
Surveyor General. }

John Taylor D.S.

N. B. There was no actual resident settlement on the above at the time of surveying

J. T., D.S.

IN TESTIMONY that the above is a copy of the original remaining on file in the Department of Internal Affairs of Pennsylvania, made conformably to an Act of Assembly approved the 16th day of February, 1833, I have hereunto set my Hand and caused the Seal of said Department to be affixed at Harrisburg, this thirteenth day of August 1907.

*Henry Howell*  
Secretary of Internal Affairs.